

HORSEFEATHERS



May 2017

**Appleatchee Riders Association
PO Box 22, Wenatchee, WA 98807
Located at 1130 Circle Street
Wenatchee, WA 98801
509-663-3175 phone ~or~ 509-664-3834 fax
appleatchee@nwi.net
www.appleatcheeriders.com**

FROM THE OFFICE

Good News! I saw concrete footings and rebar today. That is real progress. The work on the show barn is moving forward again after we had setbacks due to the rain. There is a picture in the office of what our new barn is going to look like. It will be so much better than the old red barns. Thank You, to the barn renters for your understanding during all the lockouts. The barn committee is trying to move the project forward as quickly as possible, so we can rehab the disturbed roads and campground.



Barn renters: When locking out for shows your stalls needs to be clean, and this means the floor and the feeders. This is necessary for the sanitizing to be effective. We are trying to be proactive in keeping our barns healthy. When cleaning paddocks, please do not throw manure onto the roadway.

May 1st thru October 31st, your stalls and paddocks need to be cleaned daily as specified in the barn rental rules. This helps with the fly control in the barns.

Please remember to clean up after your horse in the arenas and at the wash rack and tie rails. The tools for cleanup are there for your use.

Thank you, to all of the members that volunteered to help with the work in the Bowl on Saturday, April 22nd. With the help of a good group the work was finished in only a couple of hours. Many hands make light work. That's what our grandmothers taught us. It seems to be true.

--Thank you, Susan

WASHET WEEKEND



WASHET Came to Appleatchee again for another weekend of fun. Our local team got numerous awards. See the attached list and be proud.



ROPING

We are looking forward to Memorial Weekend, May 26th – 29th. Jess Ford has sponsored our saddle certificates for High Money winners. **Extra special thanks goes out to Jess Ford for being a reliable and reoccurring sponsor to our Appleatchee Roping Events.**

We know these events bring in a lot of traffic and want to thank everyone in advance for your patience.

Starting in June, the Roping Division has decided to cut back the Friday night ropings. We will only be roping the 1st & 3rd Friday nights of each month, only during the summer season. The participation decreases during these months due to other events and rodeos going on around us. When we move back indoors for the winter months, we plan to pick back up to our every Friday night routine.

The Roping Club will continue to practice every Tuesday night at 7PM. The fee is only \$10 for members and \$15 for non- members to practice. We would like to encourage everyone that is interested in exposing their horses to cattle, please to come join us.

We are having Team Sorting practice on the 2nd and 4th Wednesdays of each month through the summer months. Appleatchee members pay \$15 and non-members \$20. Practice starts at 6PM for setup. Everyone gets a full 2 minutes in the pen sorting, with a minimum of 3 times each. Be sure to see the Sorting Division report below for more details.

Check out our appleatcheeropers.com and see pictures of our winners along with other pictures of ropers, and link to our Facebook page.

Upcoming Dates:

May

5/05/17	Friday Night Draws	7:00
5/12/17	Friday Night Draws	7:00
5/19/17	No Roping	
5/20/17	3-man sorting	9:00
5/26/17	Memorial Day Fri Night	7:00
5/27/17	Memorial Day Roping	10:00
5/28/17	Memorial Day Roping	9:00
5/29/17	Memorial Day Roping	9:00

June

6/03/17	Team Sorting Competition	9:00
6/09/17	Friday Night Draws	7:00
6/16/17	Friday Night Draws	7:00
6/30/17	4th July Roping	7:00

Shawna

TEAM SORTING



The winter sorting series wrapped up April 15.

Congratulations to the winners: **1st division, Terri Tincher & Sonja Ragan; 2nd division, Teresa Naylor & Tia Ragan; 3rd division, Brock Ragan & Ken Tincher.** First place in each division wins a buckle, and second place wins an item of their choice (vest, sweater, leather, etc.--item less than \$100).

We will host our fourth annual **3-man 8-go open sorting** on **May 20** (one day only). Start getting prepared for some fun and fast sorting! Entry fee is \$200, but we pay out 70% of the entry fees. Last year the entry payout was over \$5700 to four winners (\$2200 to winner!), \$300 for the best go, and \$3500 to buyback winners. There will be no regular sorting competition during May.

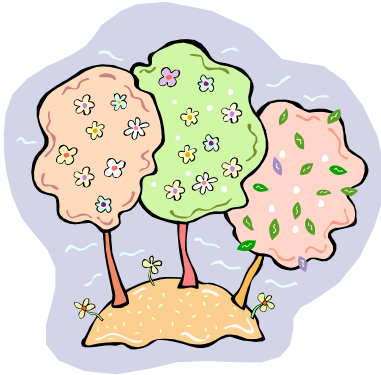
We will start the regular summer sorting series in June. Here are the dates for our summer sorting competitions that include **drawpot 3-man 3-go & 2-man 6-go sorting: June 3, July 8, August 5, September 16 & October 28.** We will keep track of cumulative scores for the summer series to award prizes to winners at all levels of riders. I hope to book during the summer a couple **1-day round-robin** competitions in which you sort with all competitors, usually about 12 riders. Maybe they will be in the evening to take advantage of long nights and cool weather. Stay tuned!

Bummer we had to cancel the **Roger Braa** clinic because of a muddy arena. I am trying to reschedule a date with Roger. The club schedule is very full and the only dates open are June 24, 25 and July 29, 30. I am waiting for Roger to get back with me. Ideally, the clinic will be on Saturday and we might have a small competition, maybe round robin, the next day on Sunday. Stay tuned.

We practice on the 2nd and 4th Wednesdays of the month at 6PM in the outdoor roping arena. Practice sessions are a great time to see if you like the sport or to test out a new horse. Cost is \$15 for at least 3 goes (+\$5 arena fee for non-members). Please arrive at 6 PM to help mark cattle.

See you in the sorting pen! –John

PERFORMANCE



Welcome to May and to Apple Blossom.

Well, we have survived April showers and are now on to the start of the busy show season for our members.

Another very successful Pat Wyse Horsemanship clinic was held last week, with those that rode in the clinic going away with new skills and very tired horses. This was Pat's 40th clinic here, and he still has the same humor, quick wit, and the eye for what the horse and rider need to work on. We also hosted Mike Major for a clinic and everyone is hoping that we can have him back. Thank you, Becky, for bringing him here.

Upcoming: We have a Jill Seely Clinic the 17th and 18th in the Sparks arena. Contact Linda Coates-Markel for a ride time. Don't forget we have our Dressage show June 10th and 11th. The Dressage Show (See details below as well as attached show flyer) will again offer classes in the increasing popular Western Dressage, so if you are thinking of trying dressage come join us.

If you are showing at a breed or other shows let me know how you did so that we can give a shout out to your success.

Until next time.

--Deb Walk

"The air of heaven is that which blows between a horses ears"
Arabian proverb



Appleatchee Riders Performance Division
is excited to host
Back to Back Dressage Shows
Saturday, June 10th and Sunday, June 11th, 2017

The months have quickly gone by, and it's planning time for our annual Dressage Show. They are Washington State Horseman B System Shows, so a rider's points will count towards NEZ, NCZ and WSH Dressage High point year-end awards; and we are offering Western Dressage classes.

The Judge for our Saturday show is Amanda Wilgenburg from Shelton, WA, and on Sunday, Jill Seely, from Port Orchard, WA will judge the riders.

Pam Morgan is the volunteer coordinator for these shows and may contact some of our members to ask for a few hours of your time to help at the shows. You can reach her at (509) 699-7167.

If you would like to sponsor a Class or High Point Award, please contact Laurie Elliott at (509) 668-7166.

We've attached a copy of our show flyer to this newsletter and, you will find the English and Western Dressage class lists. If you are interested in riding at the show, entry forms are available on the website at Appleatchee@nwi.net, or from Linda Coates-Markel (*Show Secretary*) at (406) 697-0490, or Joye Delabarre (*Show Manager*) at (509) 670-7633. There are also premiums at the Appleatchee Show Office (509) 663-3175.

We are preparing for two first-class shows thanks to our volunteers and sponsors!

--*The Dressage Show Committee*

SWEET “SUGAR” NEEDS A PERSON!

Trainer Dave Rautenkranz out of Selah, WA has just put 90 days on Sugar and has gotten her off to a great start. She is ready for a home with an experienced horse person who is capable and willing to continue turning her into a nice, broke horse, or for a home that is willing to put her in with a great trainer to continue her progress.



Sugar is 14.1H, approximately 7 years old and hadn't really had much done with her until recently. As she progressed with halter training she found focus and the ability to trust. She now gives all 4 feet, leads, ties perfectly, loaded in a 2-horse straight load (and backs out), saddles, takes the bit, walks and trots efficiently, takes

wormer and fly spray. Dave has formed a bond with her as it's rewarding to take a horse started so late from zero, and build trust and see her learn so much. Dave is willing to answer any questions if you are interested in adopting Sugar. **Dave Rautenkranz 509.595.2467.** \$700 adoption fee. All adoption fees are used to continue the process of rescuing horses who have been let down by their people.

``` Please contact Charlene Beck for more info. 669-0332 or [charmbeck@nwi.net](mailto:charmbeck@nwi.net)

## THEY CAN BE RESCUED



With Charlene Beck's help Mabel was rescued as a throw-away feed lot horse to a horse of a little girl's dreams. Halle and Mabel have already become inseparable.



### BECOME A DRY GULCH BOARD MEMBER

The Dry Gulch board would like to thank Katie Hamilton for her years of service to the board, she will be missed.

We are looking for an additional member to volunteer to be on the Dry Gulch board. We have a meeting the 2<sup>nd</sup> Wednesday of the month, and will be having work parties installing signs, trail rehab and anything else that needs to be done on the property. If you are interested please contact myself at [canterwalk@aol.com](mailto:canterwalk@aol.com) or 509-670-1595

### FAREWELL STAR

In Memoriam

TU-KAN'S STAR IMAGE

MAY 13, 1986 - APRIL 27, 2017

Harden Howell's horse, Star, was well known to many of us. She will always be remembered, especially by the Pony Club riders who learned from her.

### ***Mission Statement:***

*Appleatchee Riders Association is a member owned and operated equestrian complex. It is dedicated to the encouragement, development and promotion of horse related activities that are of interest to its membership and that are supported by member involvement and by efficient use of Appleatchee's resources. Adopted January 8th, 2006*